

Edition : 1.0
Date: (02/26)

Instruction Manual

Square Hole Type

WALL BACKING PANELS

SP-900

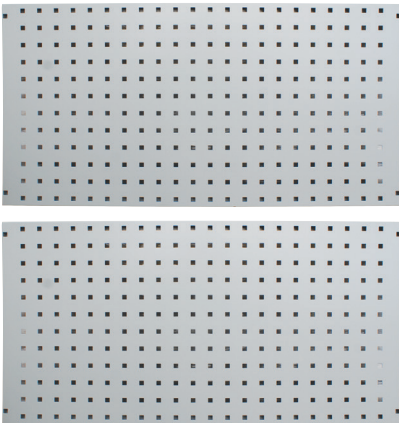
Order Code: (A412)

Before assembling, please pay attention to the following points in priority:

1. Confirm the component names and quantities against the parts list.
2. Unpack and lay out all contents on a soft, protective surface such as carpet or a flannel blanket.
3. Wear protective gloves during assembly and ensure the installation is carried out by a minimum of two people.
4. Ensure all mounting screws and fasteners are fully tightened before use.
5. Secure the wall unit to a solid structure — either a brick/masonry wall, or directly into wall studs when installing on a gyprock (plasterboard) wall (NOTE: only Masonry/concrete wall plugs are supplied).

PARTS LIST

① Louvre Panels (2pc)



② Wall plugs and Screws (8pcs) For fixing in masonry and concrete walls.



How to Fix into Masonry & Concrete Walls.

1. Drill the Hole

- Check the diameter (D) of the wall plug.
- Select a masonry drill bit that matches the plug diameter.
- Drill to a depth equal to the length of the screw (T) or slightly deeper.

2. Clean the Hole

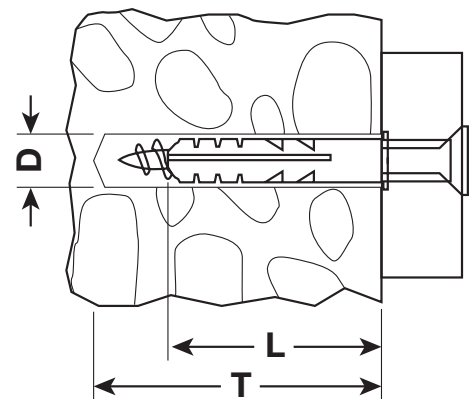
- Remove all dust and debris from the hole.
- Use a blower, brush, or compressed air to ensure the hole is completely clean.

3. Insert the Plug

- Insert the wall plug into the hole.
- Tap gently if required until it sits flush with the wall surface.

4. Fix the Screw

- Position the backing panel over the hole.
- Insert the screw through the mounting hole into the wall plug.
- Tighten securely until the panel is firmly fixed in place.



OPTIONAL ACCESSORIES

SPH-25 - Hook - Single Prong
25mm long
Order Code: A439



SPH-75 - Hook - Single Prong
75mm long
Order Code: A440



SPH-100 - Hook - Single Prong
100mm long
Order Code: A4401



DPH-25- Hook - Double Prong
Order Code: A441



DPH-75 - Hook - Double Prong
75mm long
Order Code: A442



UPH-23 - Hook - U Shape Holder
23mm deep x 55mm wide
Order Code: A4492



UPH-70 - Hook - U Shape Holder
70mm deep x 25mm wide
Order Code: A449



RPH-60 - Round Tool Holder - Loop
Ø60mm round
Order Code: A4496



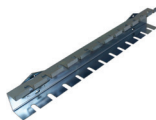
TPH-150 - Plier Holder - Triple Prong
150mm long triple
Order Code: A444



SH-135 - Holder - Spanner
135mm long
Order Code: A446



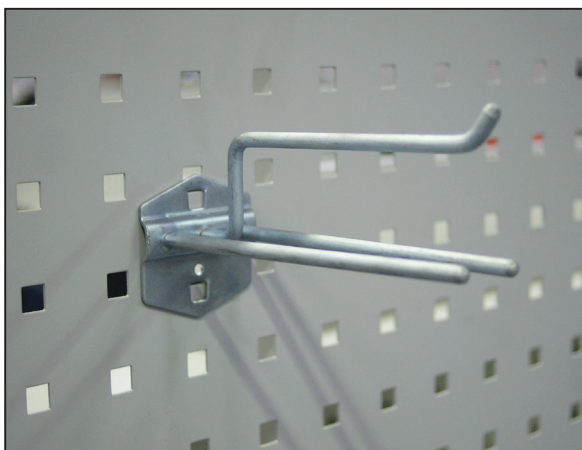
SDH-390 - Holder - Screwdriver
390mm long
Order Code: A448



LP-900 - Wall Backing Panels
Louvre Type
900 x 456 x 20mm - 2 Piece
Order Code: A410



SHOWN WITH OPTIONAL ACCESSORIES





ENVIRONMENT PROTECTION

Recycle unwanted materials instead of disposing of them as waste. All tools, accessories and packaging should be sorted, taken to a recycling centre and disposed of in a manner which is compatible with the environment. When the product becomes completely unserviceable and requires disposal, drain any fluids (if applicable) into approved containers and dispose of the product and fluids according to local regulations.

Imported by

HARE & FORBES
MACHINERYHOUSE

Australian Distributor

Hare & Forbes
Machineryhouse
Sydney - Melbourne
Adelaide - Brisbane - Perth

Ph: 1300 202 200
www.machineryhouse.com.au

MACHINERYHOUSE

New Zealand Distributor

Machineryhouse
Auckland
Christchurch

Ph: 0800 142 326
www.machineryhouse.co.nz